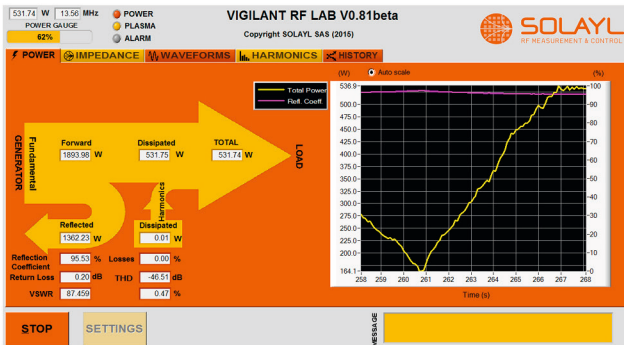


User interface for the Vigilant Power Monitor Transforms your PC into a State of the art RF laboratory



→ POWER

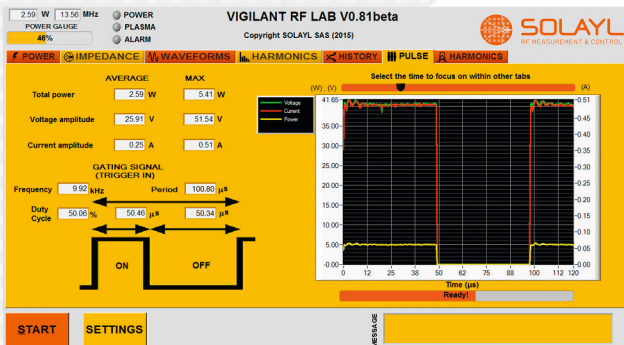
- Dissipated power
- Forward power
- Reflected power



Plug & Play diagnostic
 Customized to your application
 Intuitive interface

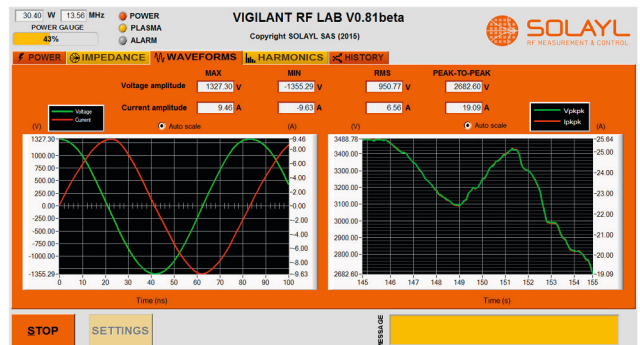
→ PULSED RF

- Average & Peak power
- Power envelope
- Voltage & Current envelope



→ VOLTAGE & CURRENT

- Waveforms
- Min, Max, RMS
- Peak-to-Peak values

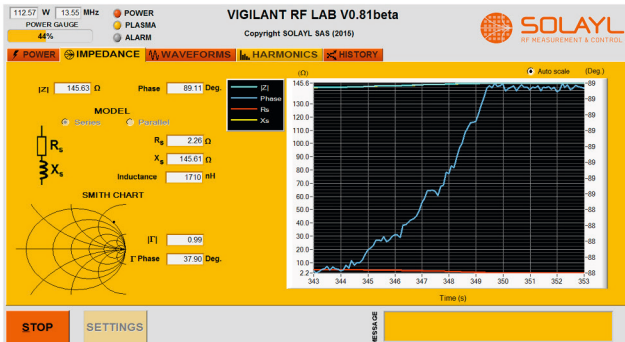


SOLAYL
 RF MEASUREMENT & CONTROL

+33 169 335 933
 contact@solayl.com
 www.solayl.com

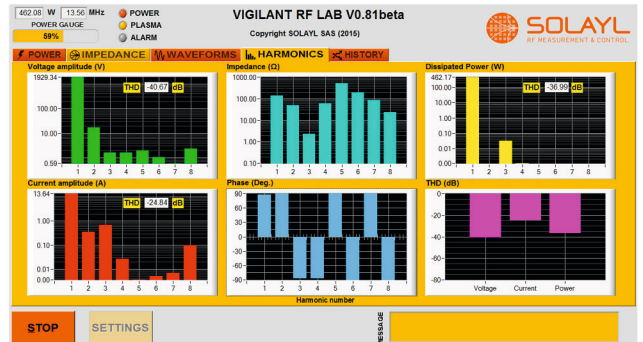
→ IMPEDANCE

- Module & Phase
- Resistance & Reactance
- Equivalent circuit
- Smith Chart

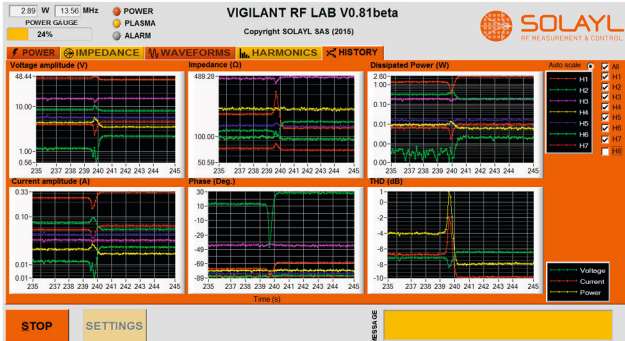


→ HARMONICS

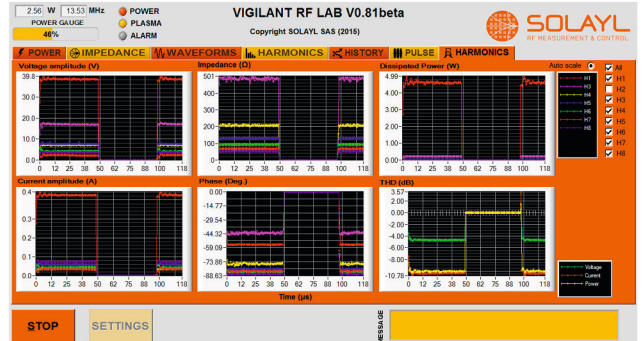
- Harmonic analysis



→ HARMONICS (Datalogging)



→ HARMONICS (During pulses)



Specifications

Operating system

Windows XP, Vista, 7, 8

USB connectivity

Version 2.0 or 3.0

